

[NB] - Noise levels for adjoining classroom and classrooms above.
 - No carpets, hard surface flooring throughout

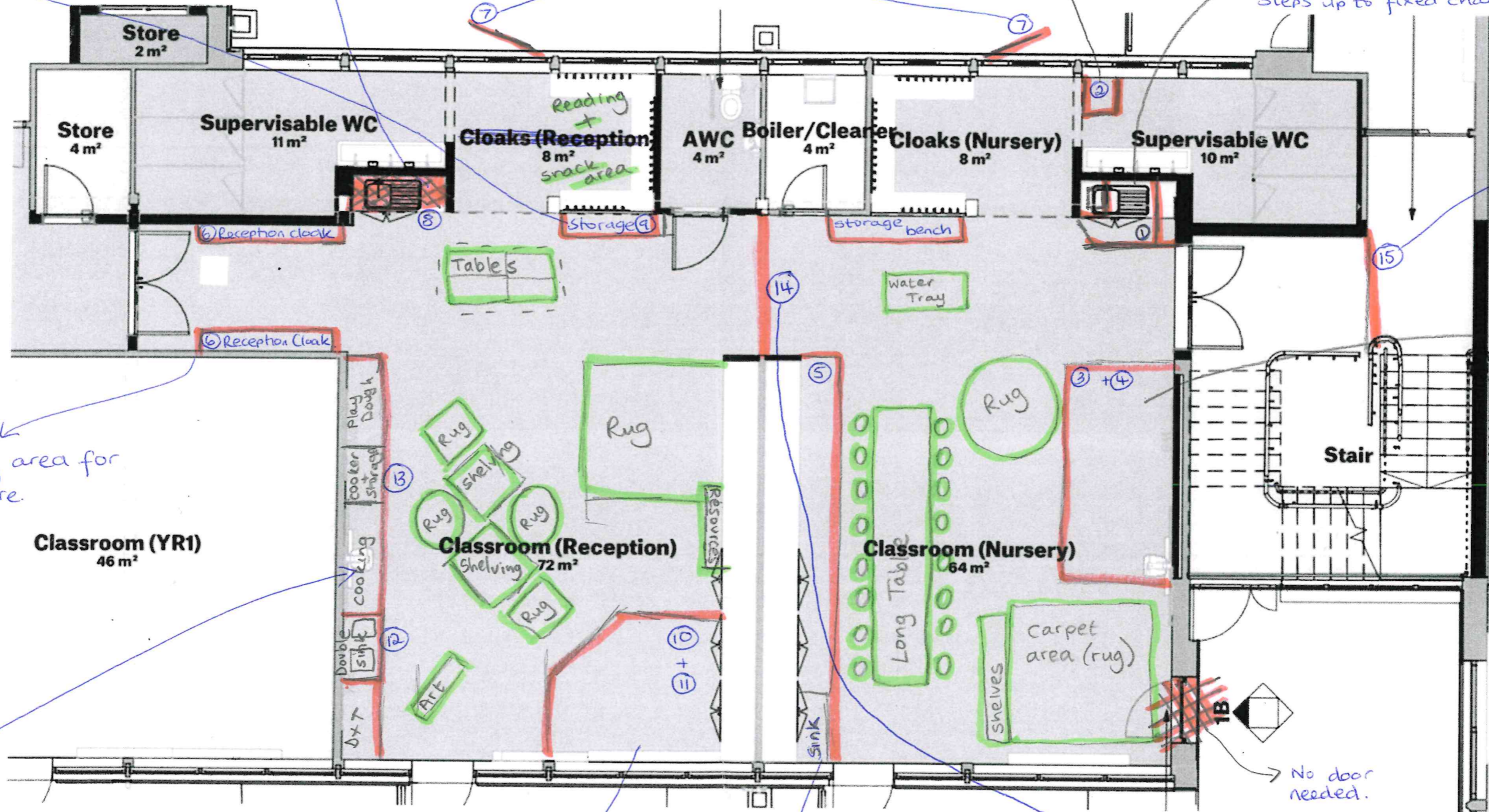
open
 9) Box style storage for child access to resources

8) No sink - large storage cupboard in its place.

7) Small cubicle added for potty training (empty)

1) No sink as in plan - instead small hand washing sink and nappy changing area with chest height wall to allow privacy and supervision. Steps up to fixed changing bench.

Door to outside to be added.



6) move cloaking area for reception to here.

Gated partition to stop young children accessing stairs.

3) Mezzanine floor accessible for children via fixed steps. Sensory area under & home area on top.

4) Sensory area to be fenced off with dark area with lights & mirrors - gated area - part foam wall.

12) + 13) Cooker head height with storage underneath.

Double sink
 Benching with storage length of wall.

10) Mezzanine floor accessible for children via fixed steps.
 11) Under area - home area.

5) sink + long bench with storage underneath some face height above storage.

14) Partition - areas need to be able to be closed off from one another or open to allow flow of children/staff.

No door needed.